

2025 show details

We are so excited to share our 2025 Recreational showcase at DCA. We have added all details to our website for ease to access at any time. All recreational classes in Cheerleading, Dance and Acro and Competition Dance and Disney Troupe (not competitive cheer teams) will perform in our yearly showcase at a professional theatre . Our shows are about shining on stage and showcasing all talents in a fun environment.

This year we will have SHOW 1 AND SHOW 2 with different groups in each show - so a bit different than previous years so please make sure you know what show your child is in and what tickets to buy . Most of our older performers will perform in both with younger stars in just one show.

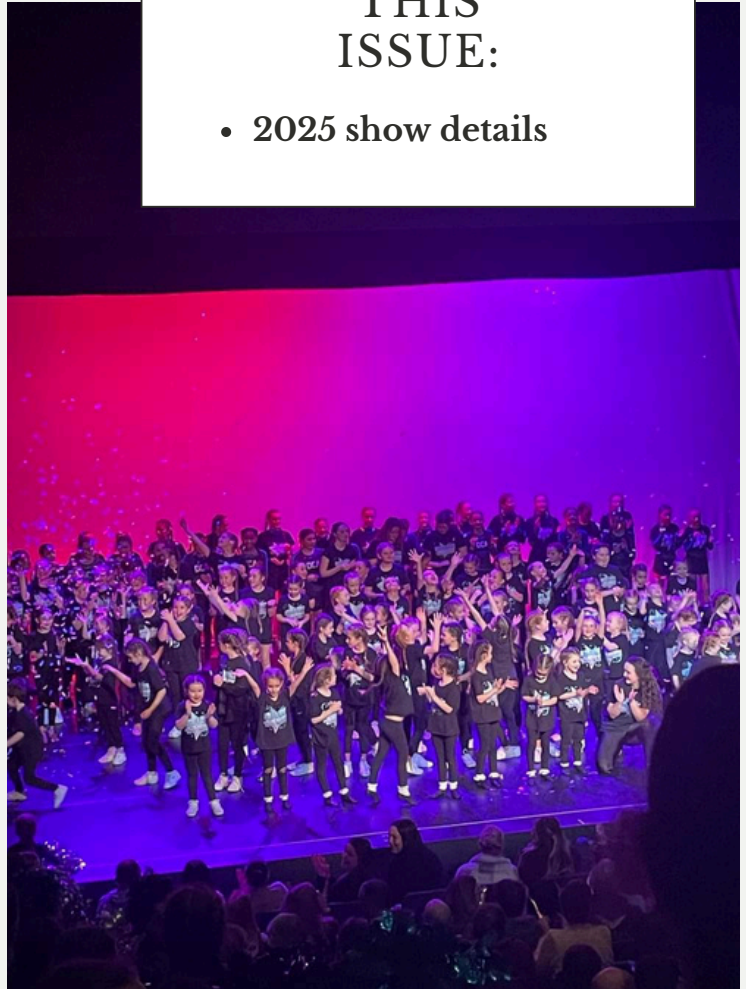
January 25th at Thornden Hall
Eastleigh SO53 2DW 11:30 am and
3:30pm show

Tickets on sale via THORNDEN
theatre website in December

Class4kids will email your booking
also to confirm your place by
November 30th 2024

WHAT'S IN THIS ISSUE:

- 2025 show details



PROGRAMMES can be pre bought on sale at the venue or can be pre ordered from the shop and will have all the students names and are a lovely memory to keep. If you would like to add a personalised message to your child these can also be bought (limited spaces)

SHOW FEE- it is very costly to put on a show and we do all we can to keep costs as low as possible. Your show fee covers all your rehearsals, the technical day, costume hire, photography on show day and a complimentary digital download of the show for £25 (if in multiple classes it is additional £8 hire for additional show costumes)

More details



HAIR/MAKE UP

HAIR FOR SHOW - 2 plaits . If unsure please check with your coaches

MAKE UP We do suggest to wear neutral (brown, cream, silver) make up as lights can make children look washed out - but it is your choice. Red lipstick (but be careful of costumes)

COSTUMES

Costumes are being sorted and will be on the website to view per class very soon and you will have most items as uniform . All costumes needed have all been purchased by DCA and will be handed to your child at class a few weeks before the show : There are no spares . We will size up at class over the next few months.

Please wear appropriate underwear , footwear and all costumes are returned and collected on show day . You will be issued the full cost of costumes if not returned.

EVERYONE WILL NEED DCA CLUB T SHIRT, BLACK LEGGINGS AND SHOES.



FOR MORE VISIT: www.dance-and-cheer-a-cality.com

More details



PARENT COMMUNICATION

Join the DCA Band app - free

To keep up to date with all information

RAFFLE DONATIONS

Do you have a local business or a raffle prize you could donate for our show raffle?

Please donate to your teacher by early Jan if you have anything we can raffle .

We use the fundraising to support DCA and also pick a charity to support for the year.

RAFFLE TICKETS WILL BE ONNSALE AT REHEARSALS and at the MERCH STAND on show day.



FOR MORE VISIT: www.dance-and-cheer-a-cality.com

More details

WHO IS PERFORMING IN WHAT SHOW?

SHOW 1 - 11:30 show time
MON POP DANCE 4:15PM
MONDAY ACRO 5:45PM
THURS CHEER WILDERN
THURS ACRO 6PM
FRI CHEER/ACRO
MON JUNIOR POP DANCE 5PM

SHOW 2- 3:30pm show time
WED CHEER 5PM
WED CHEER 5:45PM
WED CHEER 6:30PM
THURS ACRO 4:30PM
THURS ACRO 5:15PM
STREET DANCE Tues 5:15pm

BOTH SHOWS
THURS ACRO 6:45PM
MONDAY SENIOR POP DANCE
LYRICAL COMP TEAMS
SPLENDOR AND SUNSHINE
DISNEY TROUPE

5TH JAN REHEARSAL

SUNDAY 5th JAN: AT
BROOKFIELD SCHOOL BROOK
LANE SO31 7DU (IN THE
GYMNASIUM)

Rehearsal schedule - all
performers must attend

Show 1 performers : 10- 11:45 am

Show 2 performers : 12:15- 2pm

Please wear your costume and
hair as per your coaches request
and make up can be worn if you
wish.

If you are attending all day you
may bring a non messy snack -
NO NUTS and only eat and drink
not in costumes - bring a hoodie
or onesie to cover up costumes to
keep them clean.

show day

January 25th at Thornden Hall Eastleigh

WELCOME TO THE WORLD OF THEATRE!

Dress and technical Practice: will take place before your show at Thornden hall. **ALL MUST ATTEND.** The point of a technical rehearsal is to set lights and staging it does take a long time to adjust to a stage with different sounds, Microphones, lights and dimensions. Please be **PATIENT** especially at signing in time, it will be busy!

ALL STUDENTS MUST ARRIVE AT THE THEATRE FOR THEIR PRACTICE IN THEIR 1ST COTUME BUT REMEMBER TO BRING YOUR DCA LEGGINGS AND T SHIRTS WITH HAIR ALREADY DONE.

Our team will be on site to guide you to your dressing rooms - one adult will be issued a wristband to give you access to walk your child to the changing room and get your child changed into their costume Volunteer Chaperones stay to assist for the rehearsal and show will have lanyards for easy identification - make sure you know who your class helper is to inform them you are leaving, If you are concerned for your child's safety please stay and offer to chaperone. We will run the show in order at the rehearsal. Once you have practised you return to wait in your dressing rooms , get ready for the show and stay till the end of the shows.

PHOTOS - We will have a professional photographer on show day and photos can be purchased .



show one students

arrive 9am

dress rehearsal 9:30- 10:45am

show starts 11:30 am

show 2 students

arrive 1:15pm

dress rehearsal 1:45- 3pm

show starts 3:30pm

We aim to stay as close to these times as possible.

The show is approx 1 hr in length.

Those in both shows just need to attend the show 1 rehearsal at the theatre so get a longer break and return by 3pm for show start for show 2.

PARENT HELPERS : We need a minimum of 2 adult helpers per class for the show timings and rehearsals to assist. Please let your coach know if you can help. All helpers will be given lanyards for safety. If we can't get enough helpers we will have to get a child minding company to assist and charges will occur. DBS is ideal but we still may be able to offer you a job if you don't have. DCA can sort a volunteer DBS for 3 years for you for £18 if you wish to get one.

SNACKS No eating in the auditorium or in costume at all. Water can be brought and one or two snacks if required - non messy - **NO NUTS AT ALL WE HAVE CHILDREN WITH SEVERE ALLEGIES.**

SAFETY: One parent per child only will get a wristband to access the dressing room. Once in find your child's locations in their dressing room, sign in on the clipboard, get ready in costumes, take child to toilet and then inform your class helper when you are leaving to get ready for the show . Everyone must sign in and out the theatre – even chaperones!. We are at maximum capacity so we do have to limit parents backstage for show times. Badges/lanyards will be issued to official helpers. Each dressing room will have volunteer parent helper who will be in charge of that room and students. No small siblings , friends etc are allowed in dressing rooms or backstage. Teachers will be side of stage and chaperones will walk your child to the stage and back .. **YOU MUST BE QUIET BACKSTAGE AT ALL TIMES.** Any quick changes must be brought to side of stage area .Remember everyone is volunteering so please be polite and respectful. .

At the end of the show, children will be returned to their dressing rooms to be collected/signed out and collected by their designated parent.

AFTER SHOW CLEAN UP :

It is very important that we leave the **THEATRE and DRESSING ROOMS** as we found it. **BIN BAGS** will be provided. Please return all hired costumes to **CHAPERONES** on the day. If we can't get it all in my car i may need a few parents to kindly take home and bring to class for me. The glamour of the stage quickly leaves when the teachers have to play housekeepers

PARENTS ROLE :Remember, that all of our performers show a lot of courage up on the stage. They are all wonderful children who love to **PERFORM. CLAPPING AND CHEERING** helps , so please do be an active audience member. We want to create an enjoyable experience that certainly leaves behind lasting memories. Your children feed off of your emotions of the day. If your child (or someone else's) forgets an item, falls, or is missing a costume piece, don't fret! In the grand scheme of things, the kids are aiming to do their best, and we as their teachers and fellow classmates couldn't be more proud of them!!!

Common questions

WHAT DRESSING ROOM AM I?

Dressing Room 1 : Lauren's and Lyrical comp classes

Dressing Room 2 : Emma's and Izzie classes

Gym : salvation army and henry cort classes

All coaches will be on site for assistance and our Runners are our fantastic Junior coaches. If you attend 2 classes please check with your coach which dressing room you have been allocated or check the lists at rehearsals that will say.

SHOW LENGTH?

The show is approximately 1 hr. The bar is due to be open at some part of the day.

WILL MY CHILD BE NEEDED ALL DAY AT THE THEATRE?

Show 1 members will be from 9-12:30 and show 2 members from 1-4:30pm - If in both shows you are needed all day but will be opportunities to rest as per the timetable.

DO I NEED TO ATTEND REHEARSALS?

YES PLEASE – your fees have included these so why not attend, however if you are poorly please do not attend. There are LOTS OF children performing so it is a good time for all to be aware how busy the day will be and meet all the teachers .

I AM A BIT WORRIED LEAVING MY CHILD

Safety is important - we have a rehearsal to practice the sign in and out, lanyards for helpers, staff in uniform and wristbands for entrance only to dressing rooms. However if you are concerned it not a problem you can be a chaperone for all the day and both shows if you wish. Email us your name if you wish to chaperone and stay backstage so we can add you to our approved list of helpers.

CAN I FILM THE SHOW/REHEARSALS?

No we have a professional videographer and photographer filming and taking pictures of the shows and you receive a copy once received . It is a safety concern to have a phone light glaring in the audience and disrespectful to broadcast the show before the audience have seen it: Yes please do post pictures of your own child enjoying the day.

Backstage/Dressing Room photos can be taken only if all involved are happy for this to occur -i.e. take pictures of your own child and child's friends. Just check with all if it is ok to post it on social sites and make sure you tag us on your posts.

TICKETS?

Tickets are available to buy via thornden hall directly. - there are no limits on tickets - on sale on december